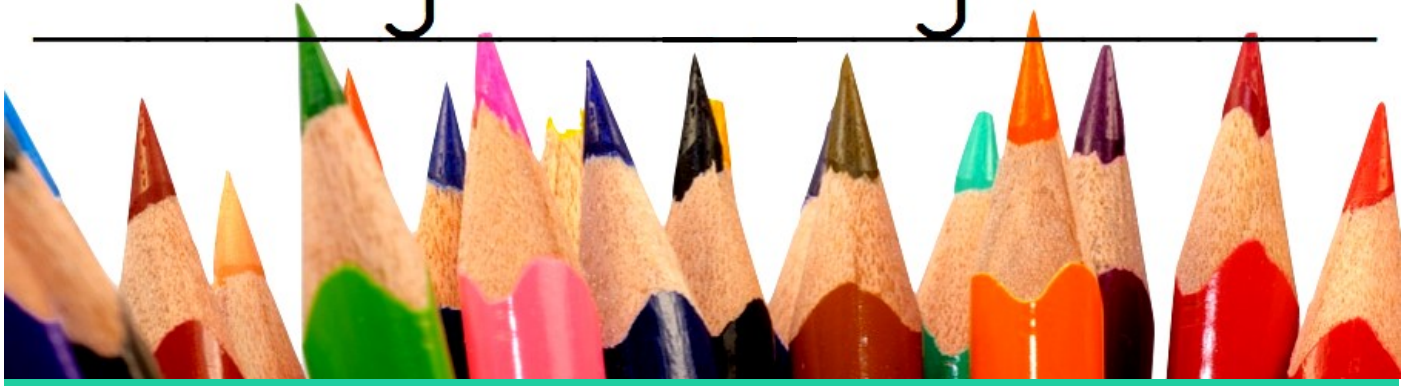


# Kindergarten Registration\*



## Open for 2021-2022!

All forms and list of requirements are available on the District's website, [www.nhsd.org](http://www.nhsd.org), under the Parents/Students tab. Registration packets can also be picked up at the NHS School District Registrar's Office located at 180 West Bridge Street or the Lower Elementary School, located at 3020 North Sungan Road, next to the Solebury Township building.

Due to the Pandemic, we would prefer to receive all paperwork via email. Please scan the documents and email by pdf directly to [mguertler@nhsd.org](mailto:mguertler@nhsd.org) in small increments of approximately 5-8 attachments per email. Once all forms and supporting documentation is received, the district can then start the transition/registration process.

## Registration forms & documentation are due by March 26

in order participate in the Spring Kindergarten Orientation Session.

**If you need any assistance, please contact the District Registrar, Mary Guertler at [mguertler@nhsd.org](mailto:mguertler@nhsd.org)**

New Hope-Solebury School District