



New Hope-Solebury School District Campus Revitalization Plan

20 January 2016

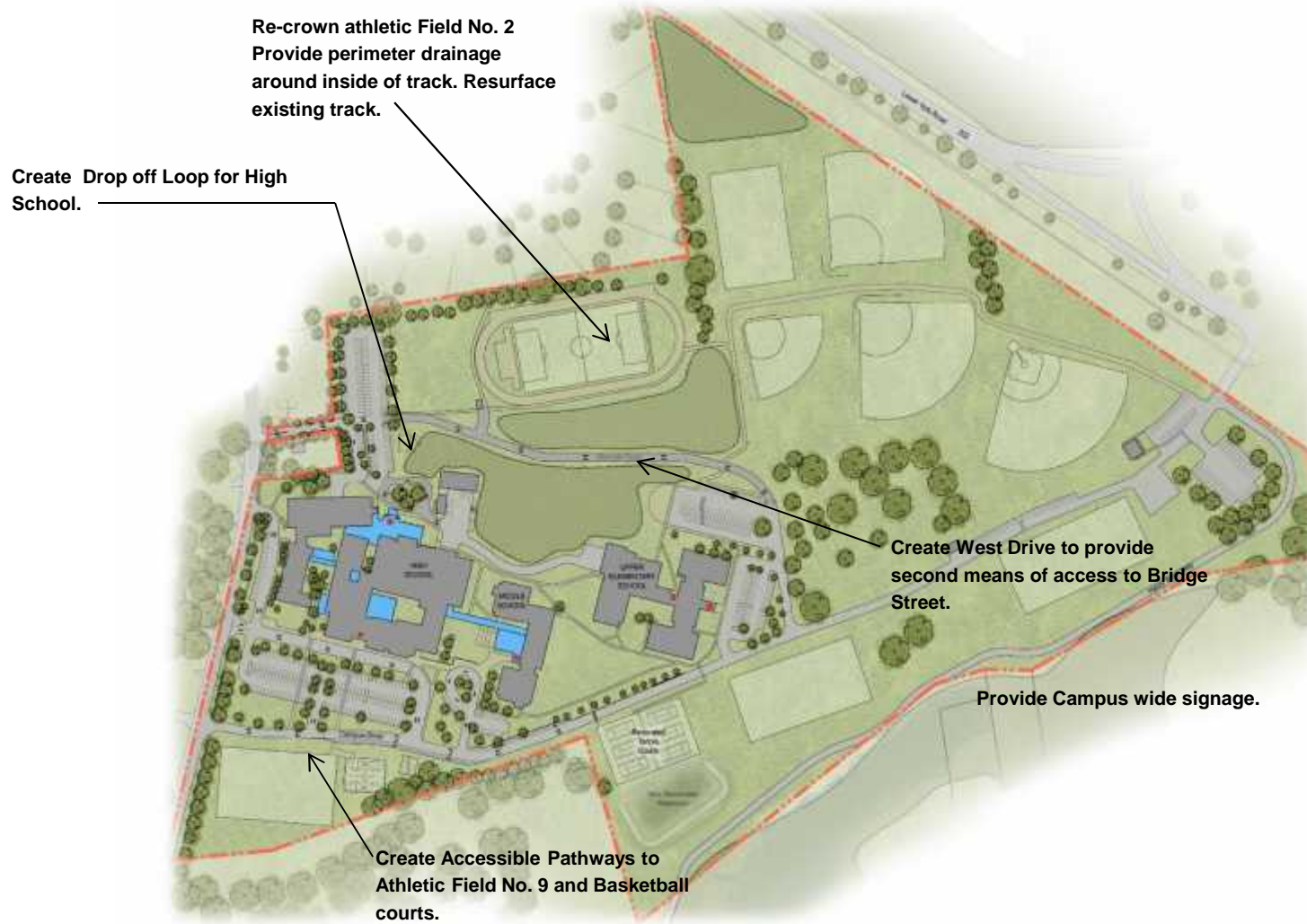
GODSHALL KANE O'ROURKE ARCHITECTS, LLC

12 East Butler Avenue, Suite 205, Ambler, PA 19002

T: 215.646.2003 F: 215.646.5707 www.gkoarchitects.com



Overall Site Plan:

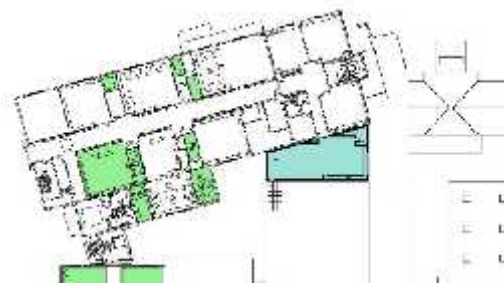


- Adds several Additions to High School as shown in blue.
- Eliminates the traffic back-ups on Bridge Street associated with the High School Drop-off by relocating the High School Entrance.
- Adds an Access Drive to connect the Stadium Parking Lot with Campus Drive.
- Miscellaneous Site Improvements as noted.

Overall Project:

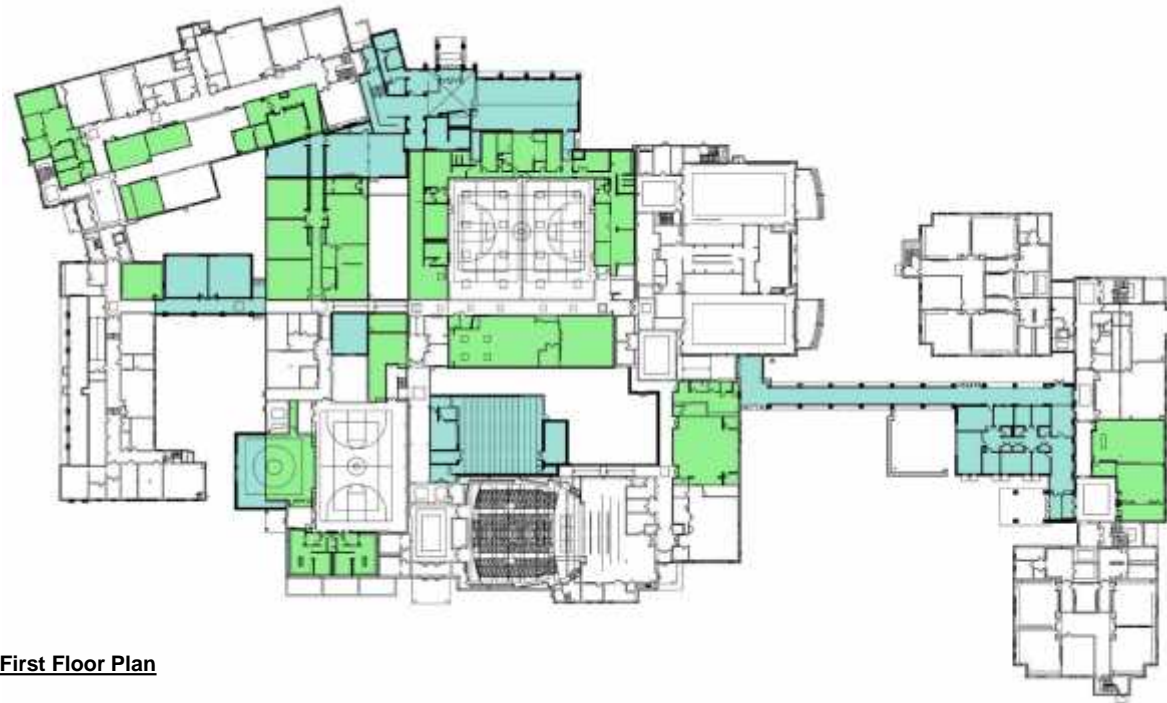
Included:

- ❑ Relocates HS Administration for improved security.
- ❑ Relocates MS Administration for improved security.
- ❑ Creates an enclosed link between the High School and Middle School.
- ❑ New Fitness Center in Building
- ❑ New Science Lab.
- ❑ One additional Music Room
- ❑ Expanded Auxiliary Gym connected to MS Gym.
- ❑ New Graphic Arts Lab near science wing.
- ❑ Reconstruct Senior Corridor and provide new Classrooms.
- ❑ Music Rooms remain in current location. Risers removed.
- ❑ Budget:
 - Infrastructure = \$10,664,150
 - Additions = \$13,177,850
 - Soft Costs = \$ 4,708,000
 - Approx. Total \$28,550,000



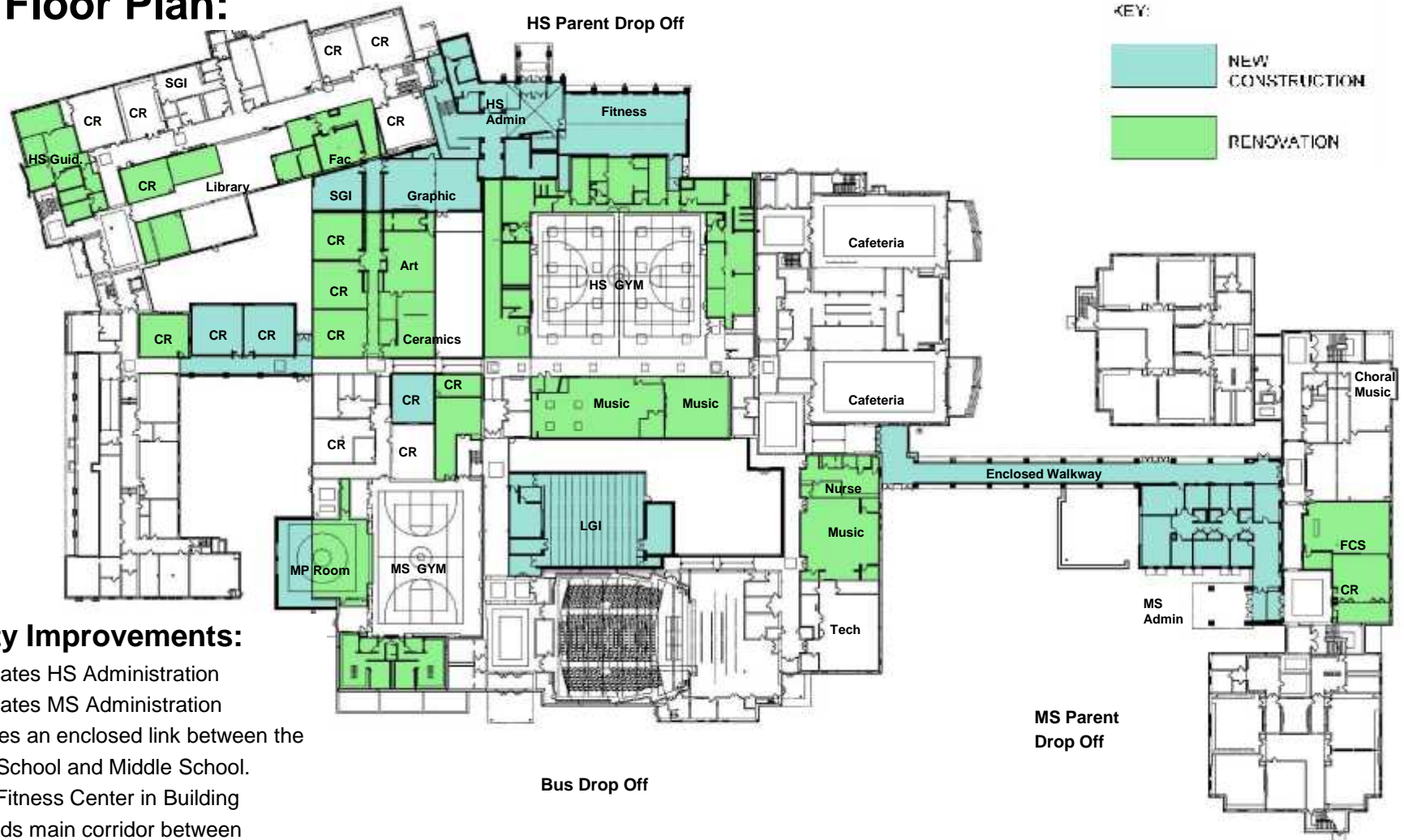
Partial Second Floor Plan

KEY:



First Floor Plan

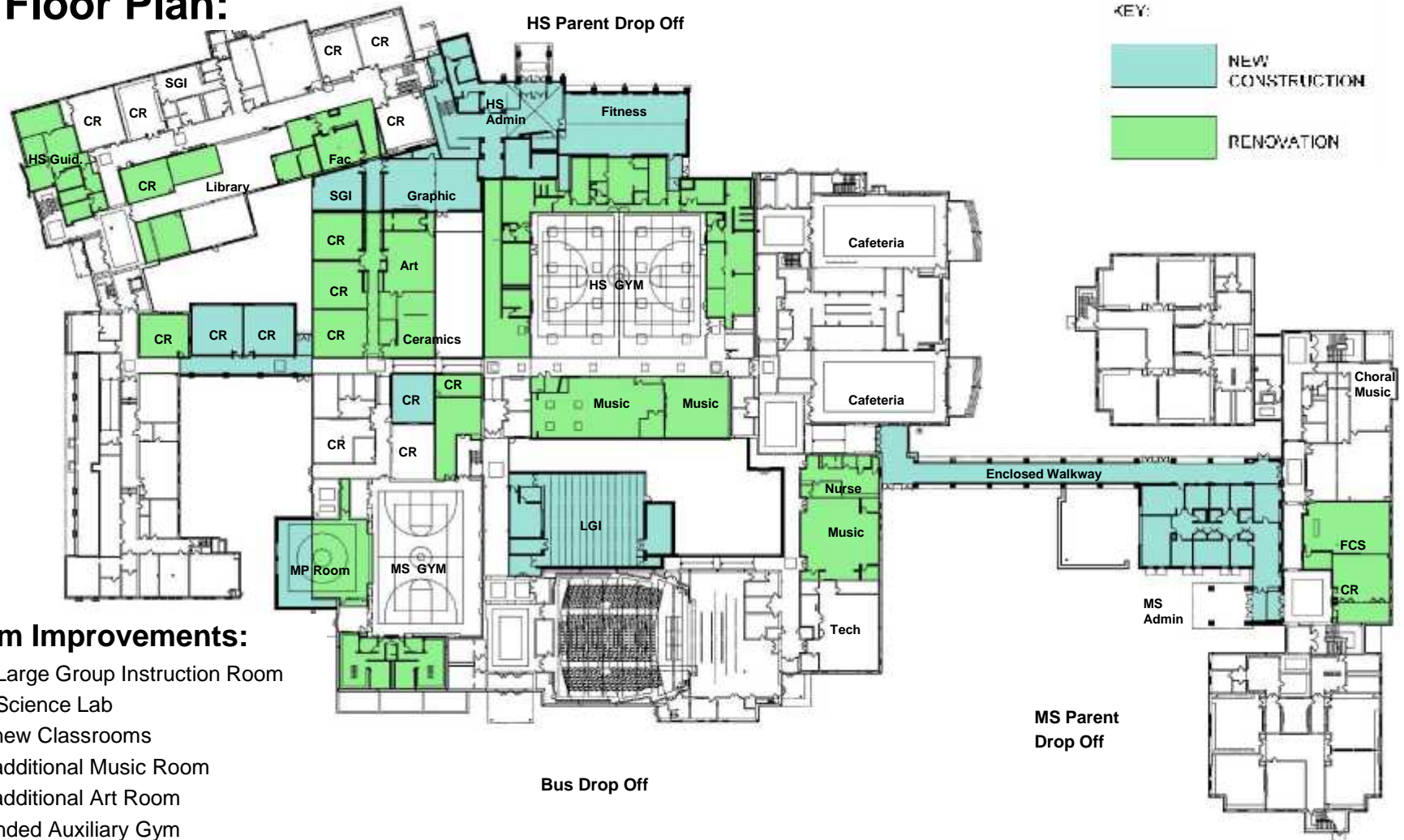
First Floor Plan:



Security Improvements:

- ❑ Relocates HS Administration
- ❑ Relocates MS Administration
- ❑ Creates an enclosed link between the High School and Middle School.
- ❑ New Fitness Center in Building
- ❑ Extends main corridor between Entrances.

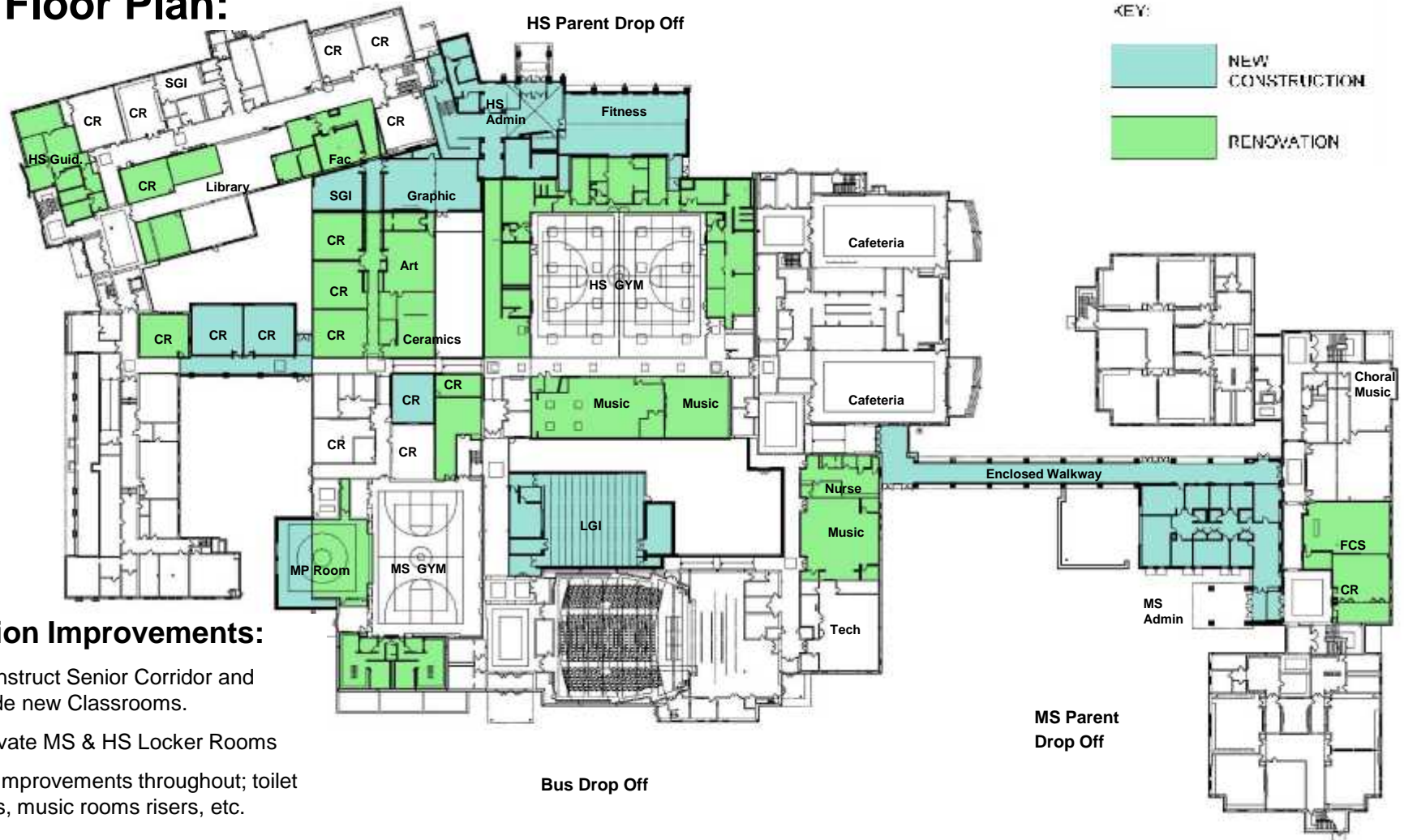
First Floor Plan:



Program Improvements:

- ❑ New Large Group Instruction Room
- ❑ New Science Lab
- ❑ Two new Classrooms
- ❑ One additional Music Room
- ❑ One additional Art Room
- ❑ Expanded Auxiliary Gym

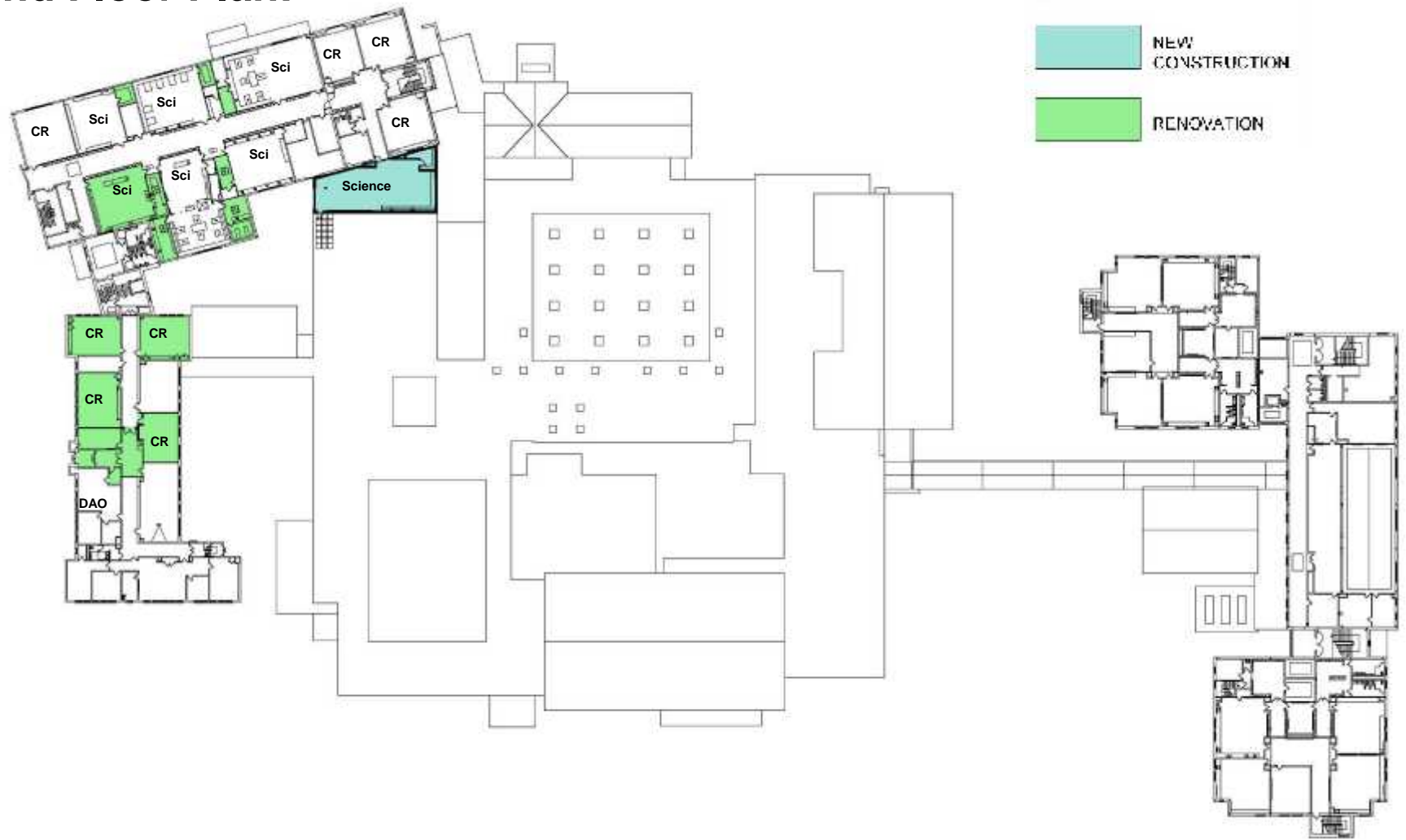
First Floor Plan:



Condition Improvements:

- ❑ Reconstruct Senior Corridor and provide new Classrooms.
- ❑ Renovate MS & HS Locker Rooms
- ❑ ADA Improvements throughout; toilet rooms, music rooms risers, etc.

Second Floor Plan:









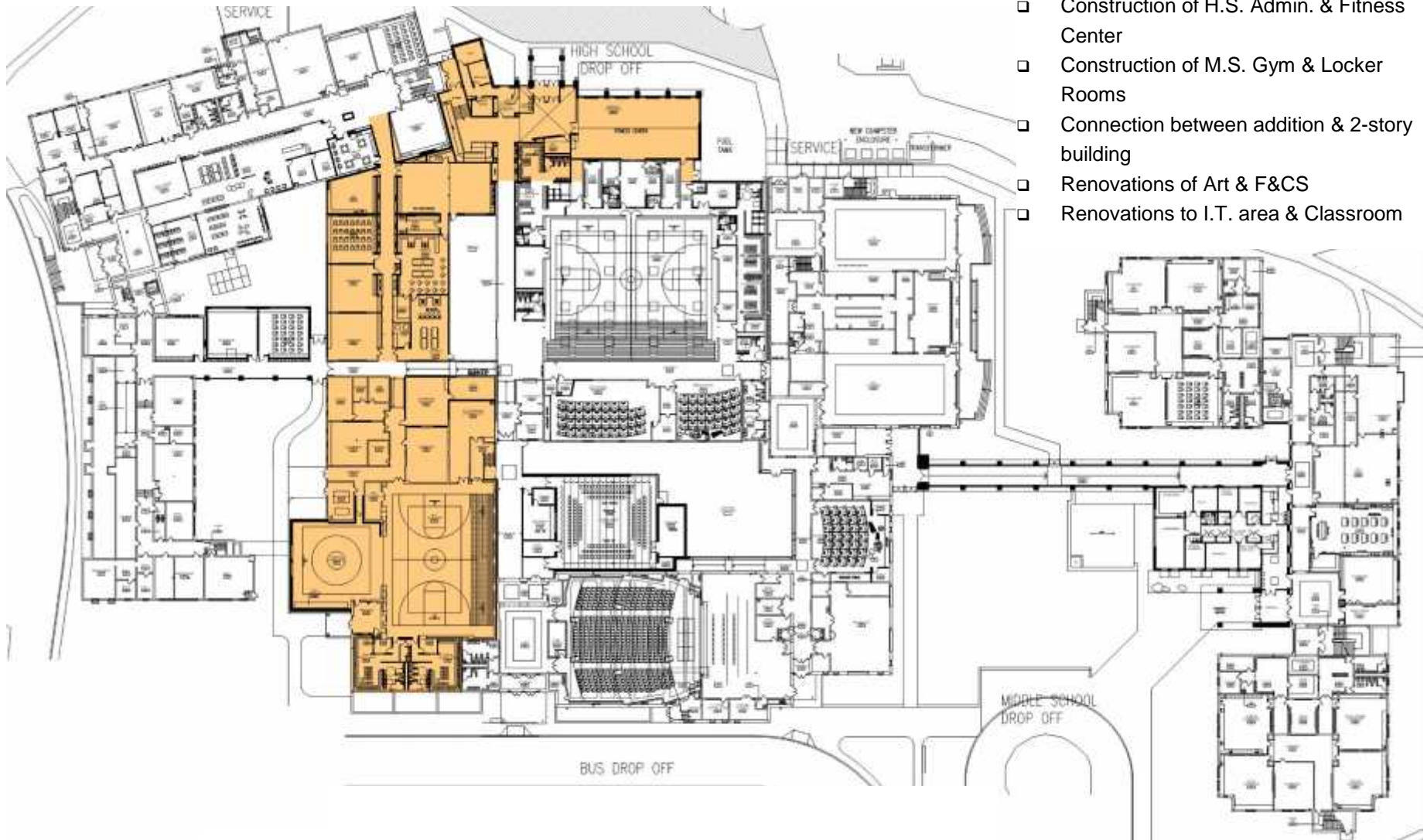




New Hope-Solebury School District

Building Phase 1
June, 2016 – Dec., 2016

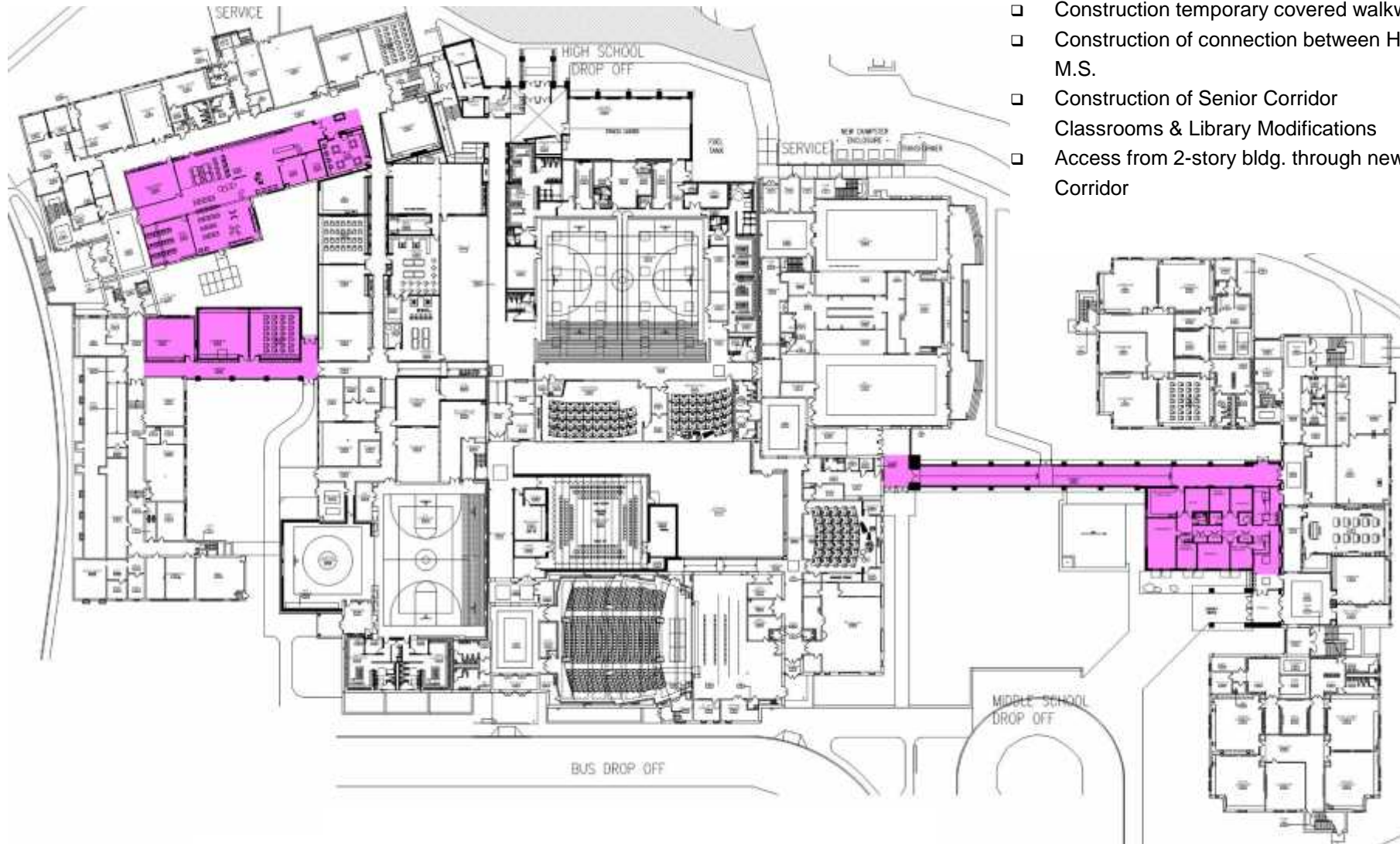
- ❑ Construction of H.S. Admin. & Fitness Center
- ❑ Construction of M.S. Gym & Locker Rooms
- ❑ Connection between addition & 2-story building
- ❑ Renovations of Art & F&CS
- ❑ Renovations to I.T. area & Classroom



New Hope-Solebury School District

Building Phase 2A Jan., 2017 – June, 2017

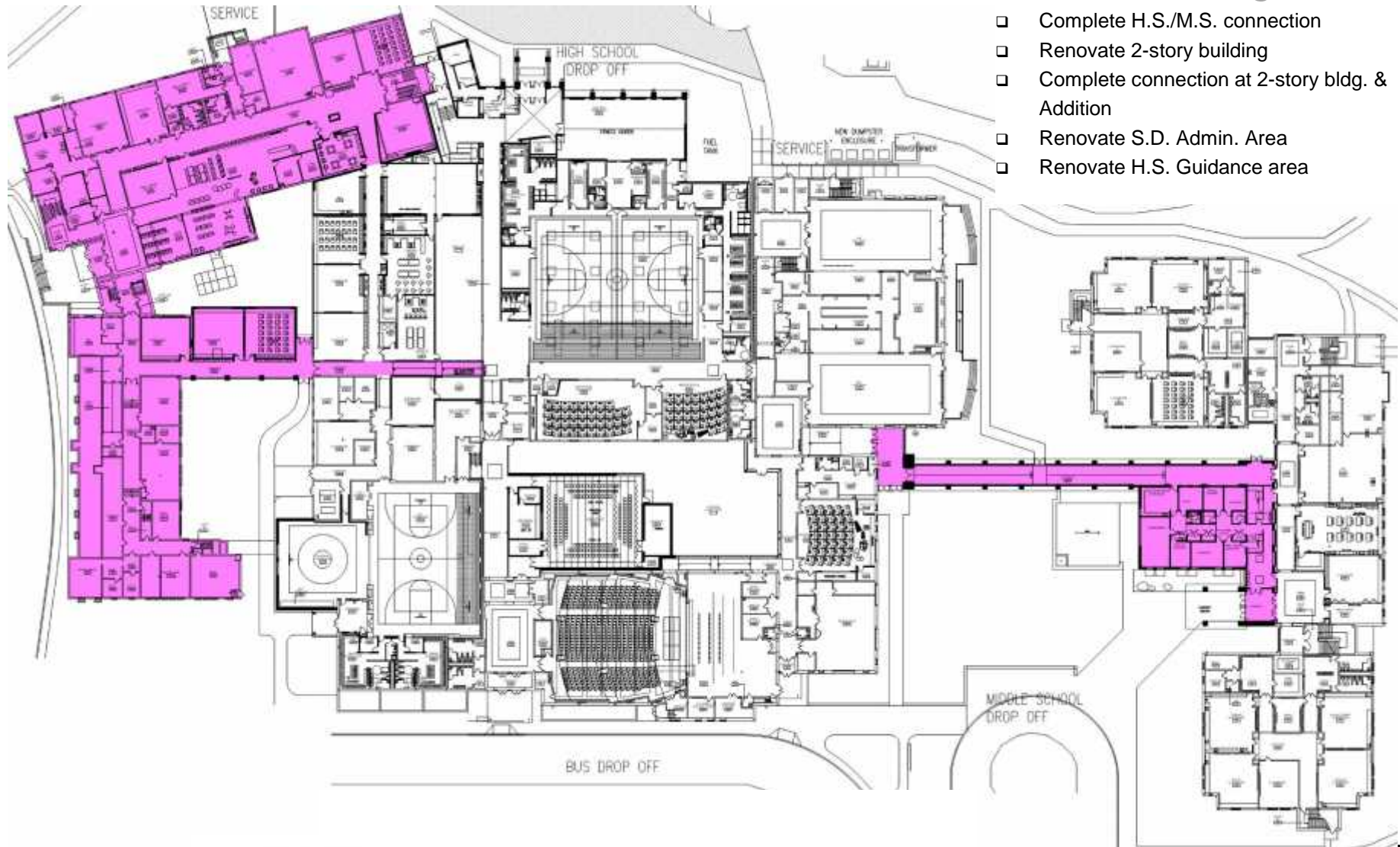
- ❑ Construction temporary covered walkway
- ❑ Construction of connection between H.S. & M.S.
- ❑ Construction of Senior Corridor
Classrooms & Library Modifications
- ❑ Access from 2-story bldg. through new Art
Corridor



New Hope-Solebury School District

Building Phase 2B
June, 2017 – Aug., 2017

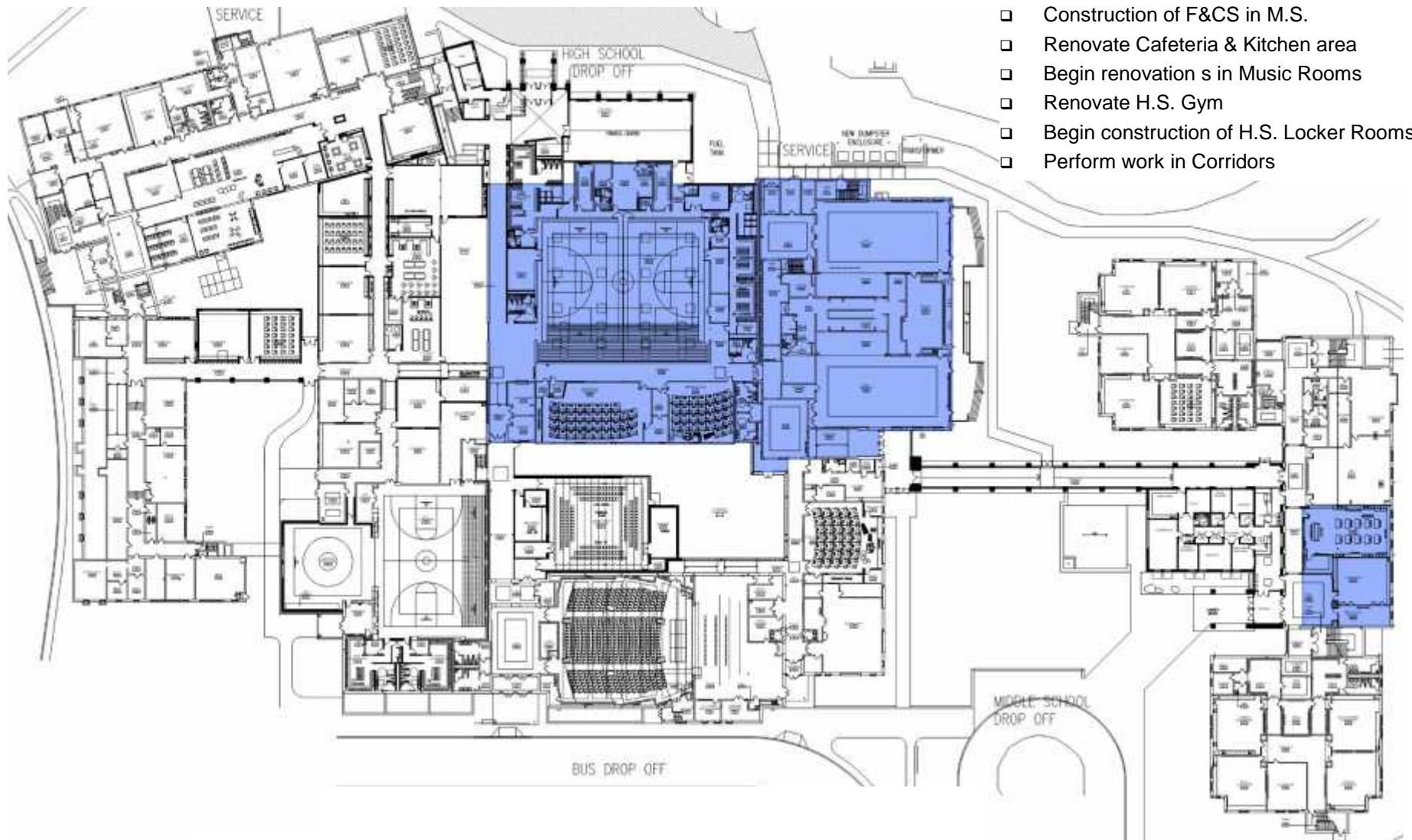
- ❑ Complete H.S./M.S. connection
- ❑ Renovate 2-story building
- ❑ Complete connection at 2-story bldg. & Addition
- ❑ Renovate S.D. Admin. Area
- ❑ Renovate H.S. Guidance area



New Hope-Solebury School District

Building Phase 3A *June, 2017 – Aug., 2017*

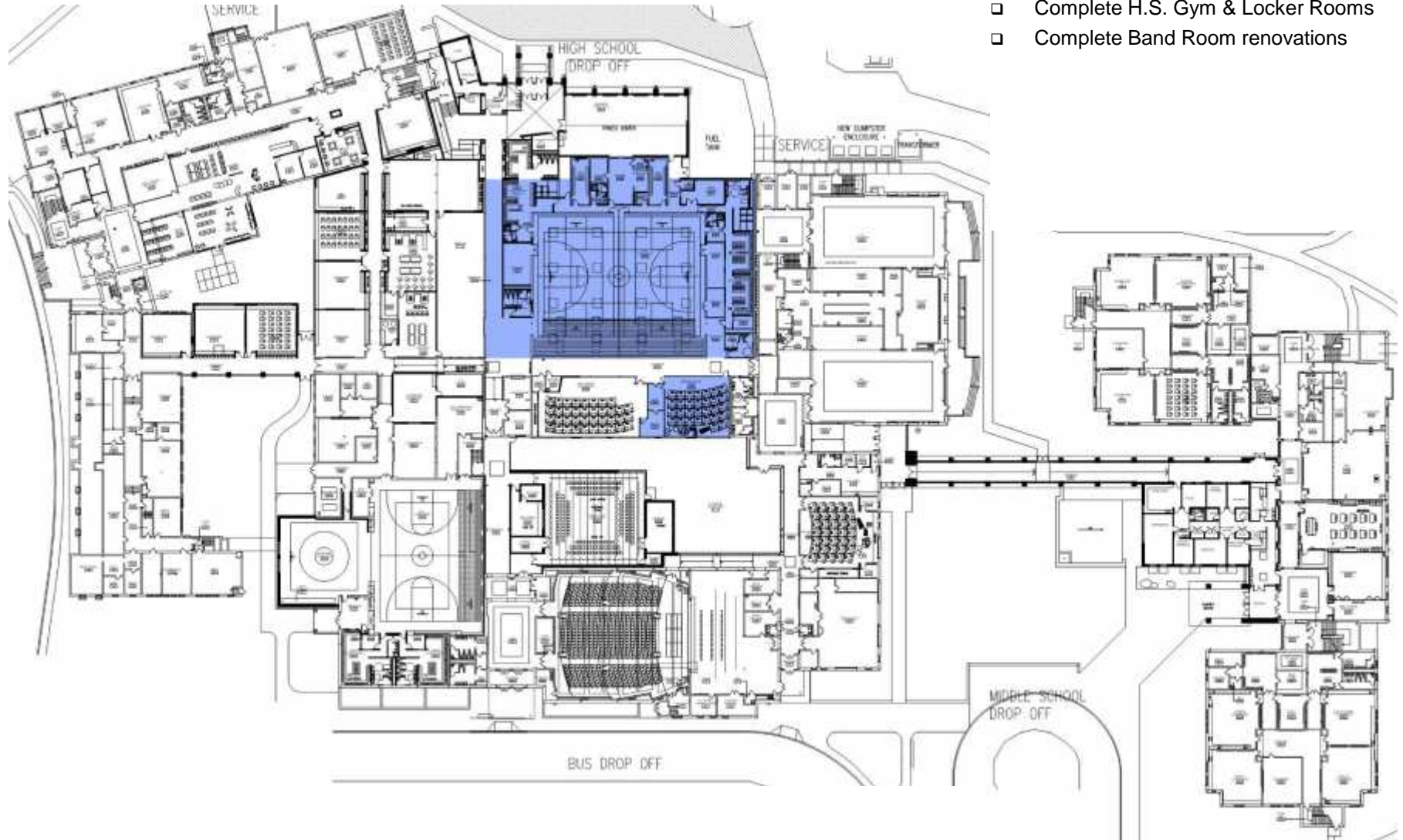
- ❑ Construction of F&CS in M.S.
- ❑ Renovate Cafeteria & Kitchen area
- ❑ Begin renovations in Music Rooms
- ❑ Renovate H.S. Gym
- ❑ Begin construction of H.S. Locker Rooms
- ❑ Perform work in Corridors



New Hope-Solebury School District

Building Phase 3B
Sept., 2017 – Dec., 2017

- ❑ Complete H.S. Gym & Locker Rooms
- ❑ Complete Band Room renovations

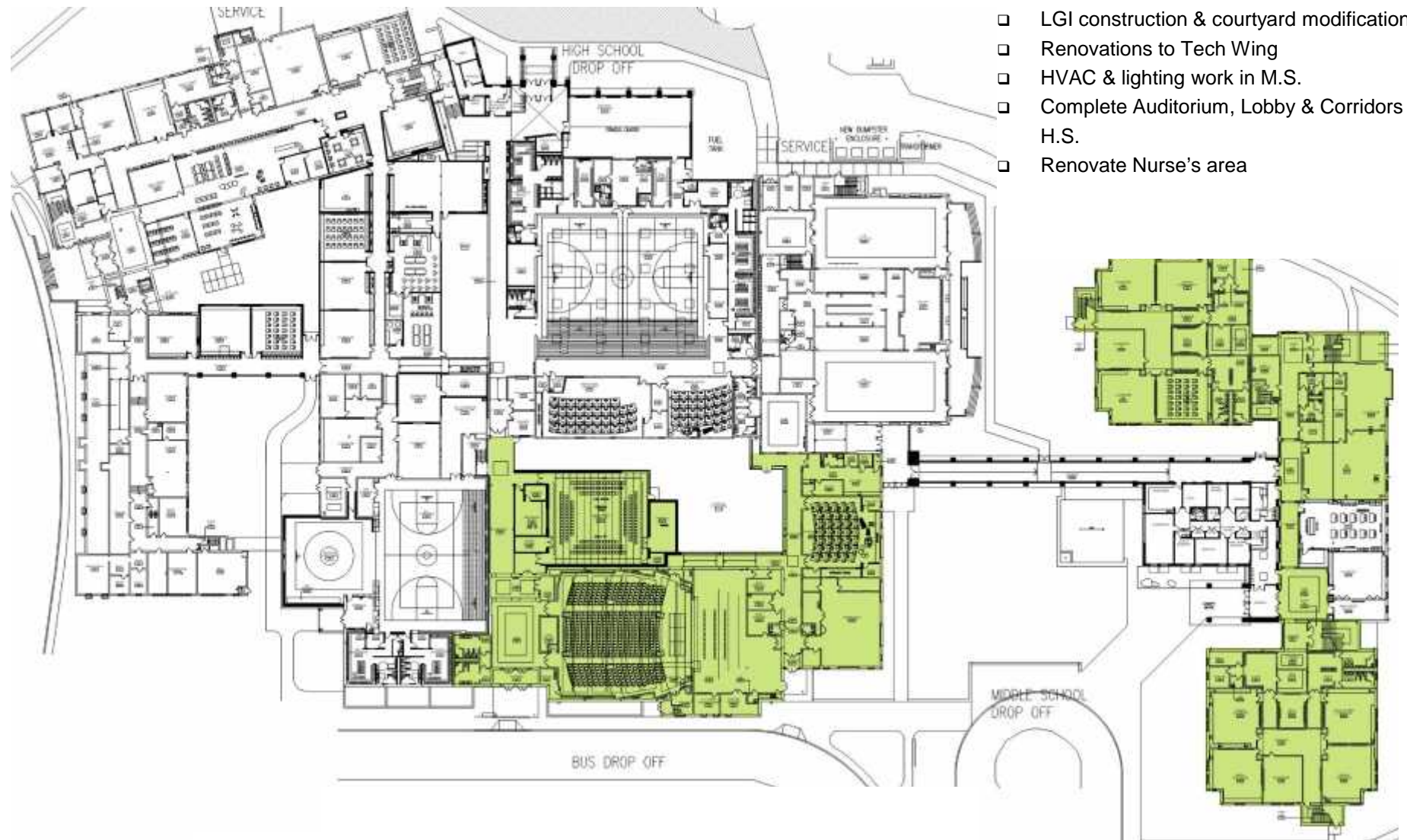


New Hope-Solebury School District

Building Phase 4

Jan., 2018 – Aug., 2018

- ❑ LGI construction & courtyard modifications
- ❑ Renovations to Tech Wing
- ❑ HVAC & lighting work in M.S.
- ❑ Complete Auditorium, Lobby & Corridors in H.S.
- ❑ Renovate Nurse's area



New Hope-Solebury School District

Design Option Infrastructure Upgrades

Architectural Features:

- ✓ Weather Protection repair to Exterior Walls at Gymnasiums
- ✓ New Finishes; Flooring, Ceilings and Wall Paint in public areas and replace older Doors
- ✓ New Corridor Lockers
- ✓ New Casework in '38 Building and balance of Science Rooms
- ✓ Accessibility Upgrades to Public spaces and Locker Rooms
- ✓ Accessibility access to all Teaching Spaces, Locker Rooms and Toilet Rooms.

Plumbing Features:

- ✓ Replace older Drinking Fountains
- ✓ Replace older Plumbing Fixtures and to address ADA issues

Mechanical Features:

- ✓ New High Efficiency Boiler Plant
- ✓ Central Chiller for High School
- ✓ Replace Air Handling Units / Eliminate R-22 Refrigerant
- ✓ Eliminate older Unit Ventilators
- ✓ Provide 4 Pipe Air Conditioning System for Middle School
- ✓ New HVAC Controls
- ✓ Energy Efficiency and Energy Management

Electrical Features:

- ✓ New Generator capable of handling additional loads
- ✓ Replace older Electric Panels in '38 building
- ✓ New Fire Alarm System for both the High School and Middle School
- ✓ Additional Security System including Door Access Control and Camera Locations
- ✓ Upgrade to Data System Distribution Cable.
- ✓ Energy Efficient LED Lighting throughout High School and Middle School
- ✓ Provide Daylight Harvesting for Lighting and Energy Savings
- ✓ New Integrated Clock System and Public Address System for High School and Middle School
- ✓ New Sound Systems for Gym and Auditorium (Summer of 2015)

Thank you for your Time:

